

# Plane Stress Bracket

---

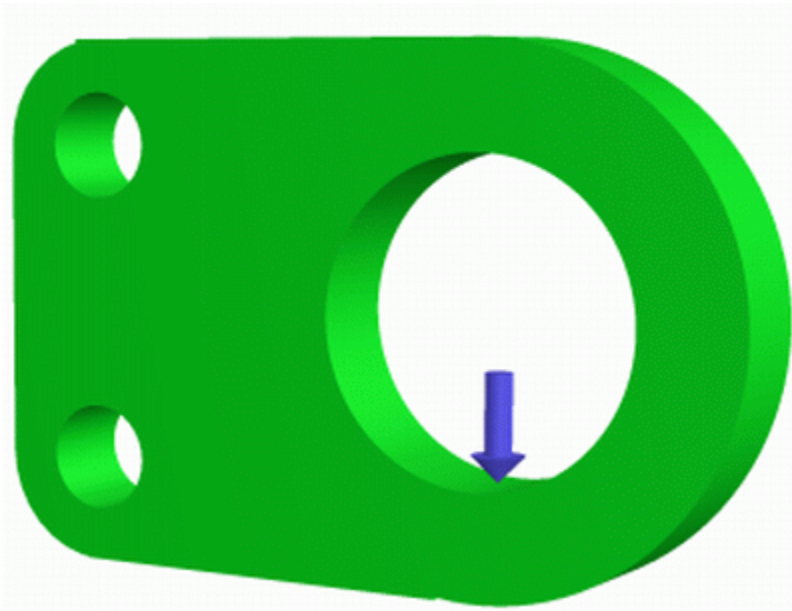
## Introduction

This tutorial is the second of three basic tutorials created to illustrate common features in ANSYS. The plane stress bracket tutorial builds upon techniques covered in the first tutorial (3D Bicycle Space Frame), it is therefore essential that you have completed that tutorial prior to beginning this one.

The 2D Plane Stress Bracket will introduce boolean operations, plane stress, and uniform pressure loading.

## Problem Description

The problem to be modeled in this example is a simple bracket shown in the following figure. This bracket is to be built from a 20 mm thick steel plate. A figure of the plate is shown below.



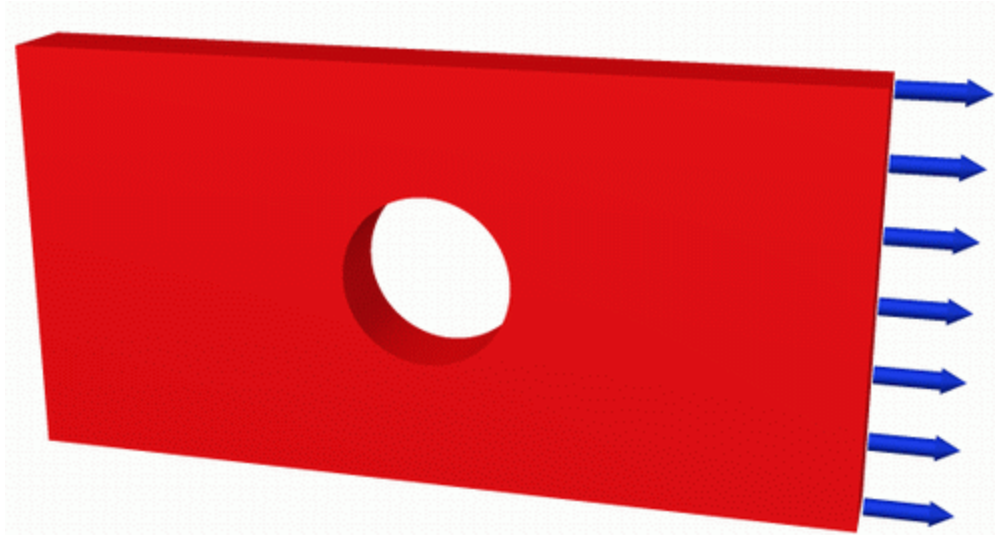
This plate will be fixed at the two small holes on the left and have a load applied to the larger hole on the right.

---

## Verification Example

The first step is to simplify the problem. Whenever you are trying out a new analysis type, you need something (ie analytical solution or experimental data) to compare the results to. This way you can be sure that you've gotten the correct analysis type, units, scale factors, etc.

The simplified version that will be used for this problem is that of a flat rectangular plate with a hole shown in the following figure:



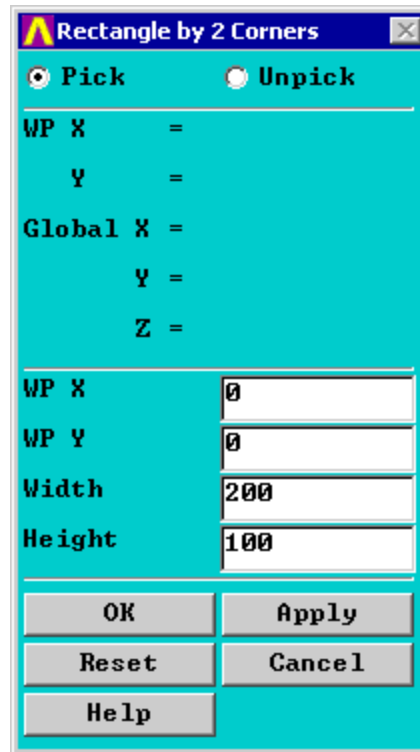
## Preprocessing: Defining the Problem

1. **Give the Simplified Version a Title**  
Utility Menu > File > Change Title
2. **Form Geometry**

Boolean operations provide a means to create complicated solid models. These procedures make it easy to combine simple geometric entities to create more complex bodies. Subtraction will be used to create this model, however, many other Boolean operations can be used in ANSYS.

- a. Create the main rectangular shape

Instead of creating the geometry using keypoints, we will create an **area** (using GUI)  
**Preprocessor > Create > (-Areas-) Rectangle > By 2 Corners**

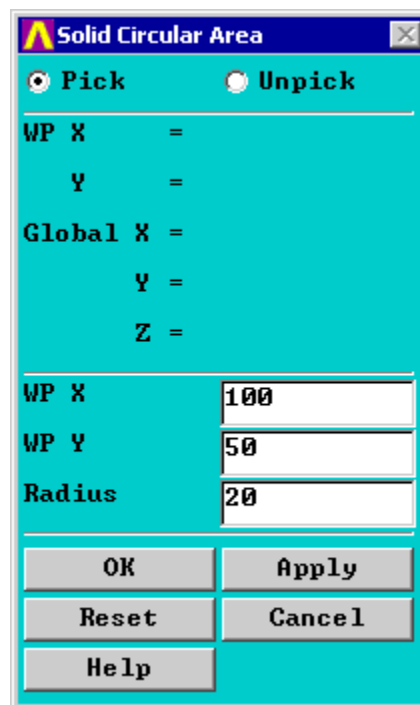


- Fill in the window as shown above. This will create a rectangle where the bottom left corner has the coordinates 0,0,0 and the top right corner has the coordinates 200,100,0.

(Alternatively, the command line code for the above command is `BLC4,0,0,200,100`)

b. Create the circle

**Preprocessor > Create > (-Areas-) Circle > Solid Circle**



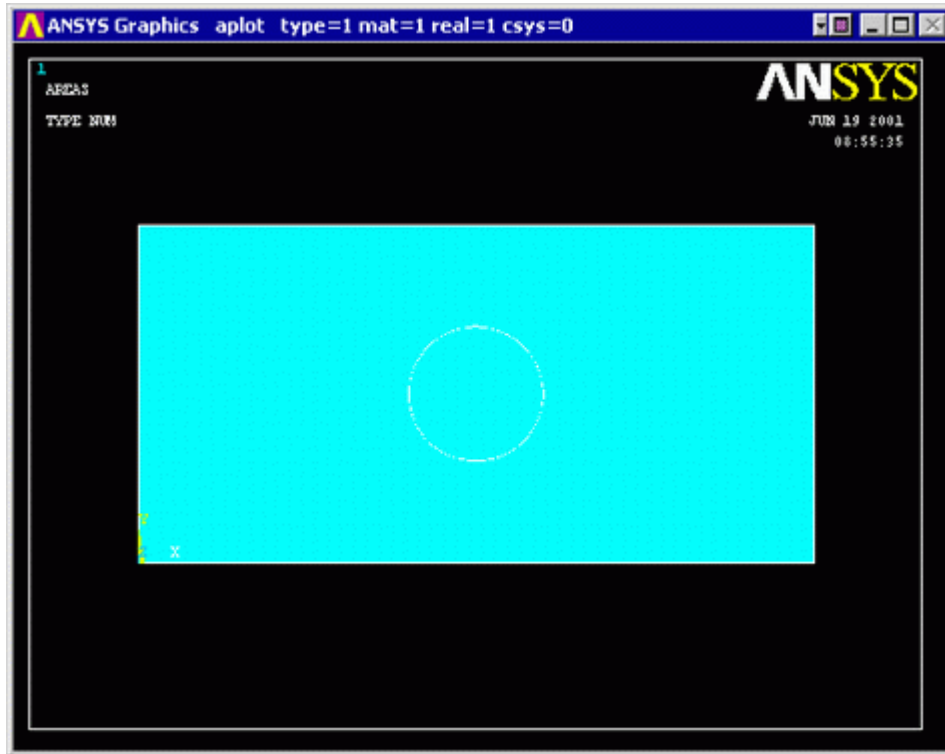
- Fill in the window as shown above. This will create a circle where the center has the

coordinates 100,50,0 (the center of the rectangle) and the radius of the circle is 20 mm.

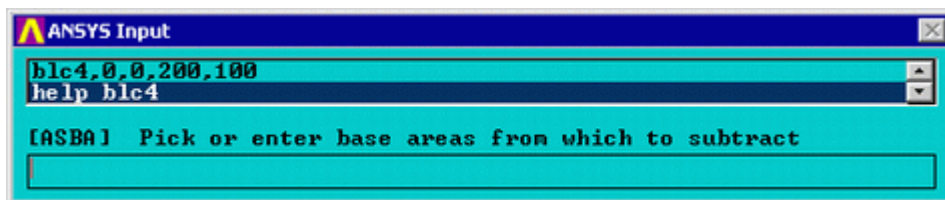
(Alternatively, the command line code for the above command is `CYL4,100,50,20` )

### c. Subtraction

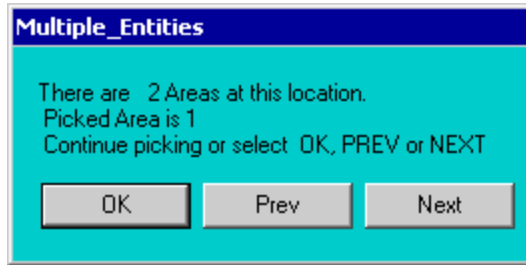
Now we want to subtract the circle from the rectangle. Prior to this operation, your image should resemble the following:



- To perform the Boolean operation, from the Preprocessor menu select:  
**(-Modeling-) Operate > (-Booleans-) Subtract > Areas >**
- At this point a 'Subtract Areas' window will pop up and the ANSYS Input window will display the following message: [ASBA] Pick or enter base areas from which to subtract (as shown below)

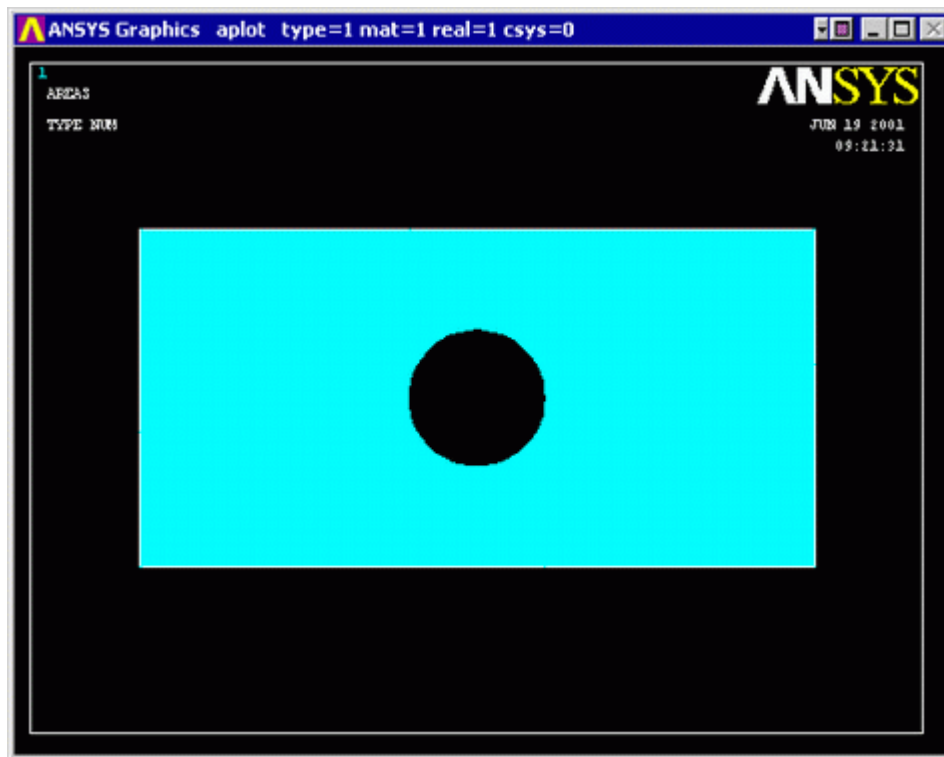


- Therefore, select the base area (the rectangle) by clicking on it. Note: The selected area will turn pink once it is selected.
- The following window may appear because there are 2 areas at the location you clicked.



- Ensure that the entire rectangular area is selected (otherwise click 'Next') and then click 'OK'.
- Click 'OK' on the 'Subtract Areas' window.
- Now you will be prompted to select the areas to be subtracted, select the circle by clicking on it and then click 'OK'.

You should now have the following model:



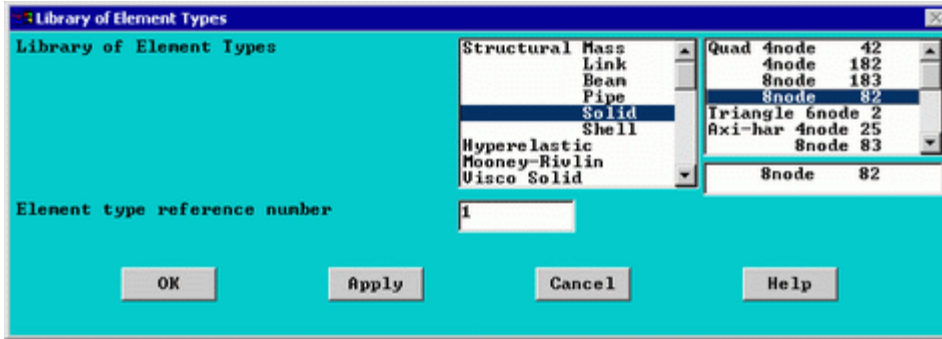
(Alternatively, the command line code for the above step is `ASBA,1,2`)

### 3. Define the Type of Element

It is now necessary to define the type of element to use for our problem:

**Preprocessor Menu > Element Type > Add/Edit/Delete**

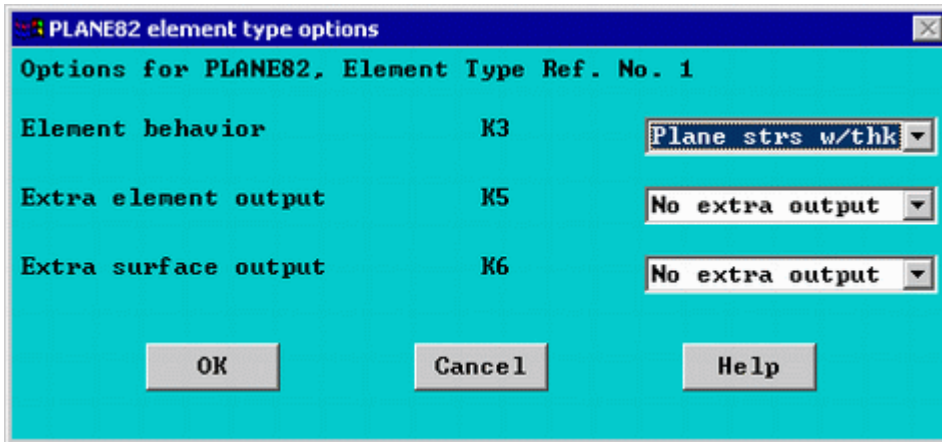
- Add the following type of element: **Solid** (under the Structural heading) and the **Quad 82** element, as shown in the above figure.



PLANE82 is a higher order version of the two-dimensional, four-node element (PLANE42). PLANE82 is an eight noded quadrilateral element which is better suited to model curved boundaries.

For this example, we need a plane stress element with thickness, therefore

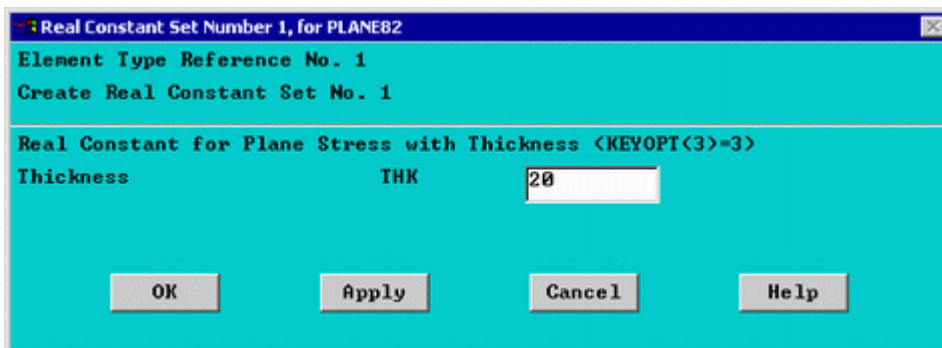
- Click on the 'Options...' button. Click and hold the K3 button, and select 'Plane str w/thk', as shown below.



(Alternatively, the command line code for the above step is `ET, 1, PLANE82` followed by `KEYOPT, 1, 3, 3`)

#### 4. Define Geometric Properties

- As in previous examples **Preprocessor menu > Real Constants > Add/Edit/Delete**
- Enter a thickness of 20 as shown in the figure below. This defines a plate thickness of 20mm)



(Alternatively, the command line code for the above step is `R,1,20`)

## 5. Element Material Properties

- As shown in previous examples, select **Preprocessor > Material Props > Material models > Structural > Linear > Elastic > Isotropic**

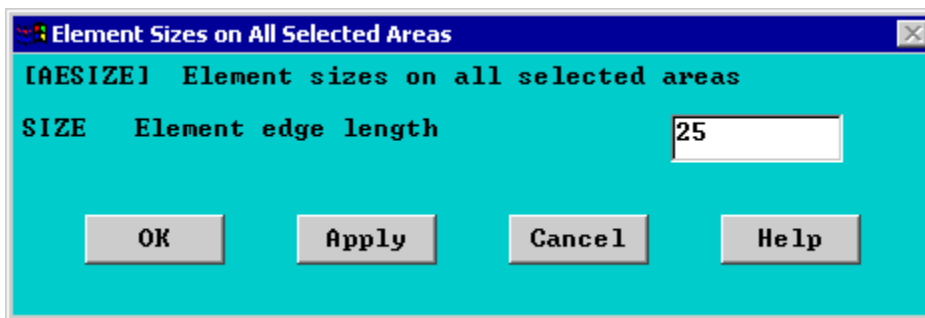
We are going to give the properties of Steel. Enter the following when prompted:

```
EX 200000
PRXY 0.3
```

(Alternatively, the command line code for the above step is `MP,EX,1,200000` followed by `MP,PRXY,1,0.3`)

## 6. Mesh Size

To tell ANSYS how big the elements should be, **Preprocessor > (-Meshing-) Size Cntrl > (-Areas-) All Areas**



- Select an element edge length of 25. We will return later to determine if this was adequate for the problem.

(Alternatively, the command line code for the above step is `AESIZE,ALL,25,`)

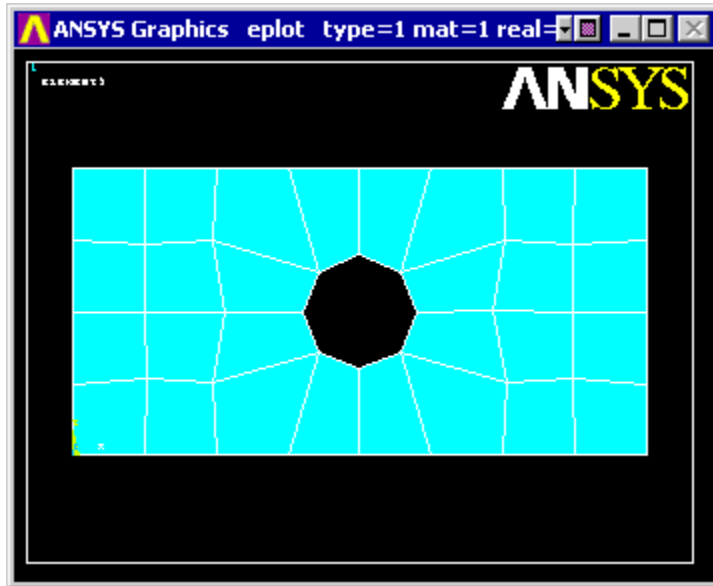
## 7. Mesh

Now the frame can be meshed.

- In the 'Preprocessor' menu select **Mesh > (-Areas-) Free** and select the area when prompted

(Alternatively, the command line code for the above step is `AMESH,ALL`)

You should now have the following:



### Saving Your Job

Utility Menu > File > Save as...

## Solution Phase: Assigning Loads and Solving

You have now defined your model. It is now time to apply the load(s) and constraint(s) and solve the the resulting system of equations.

### 1. Define Analysis Type

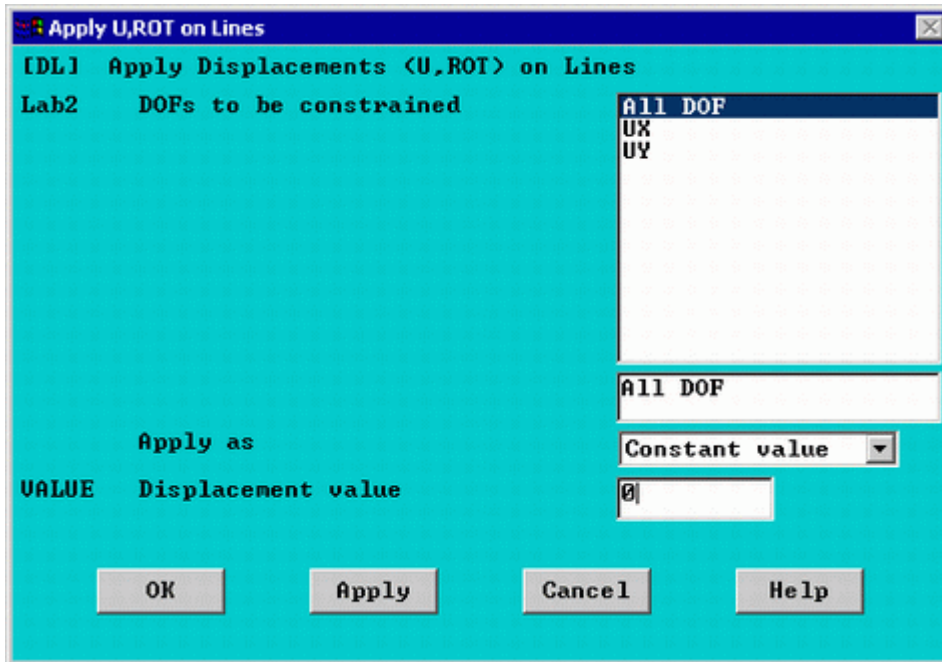
- Ensure that a Static Analysis will be performed (**Solution > New Analysis**).

(Alternatively, the command line code for the above step is **ANTYPE, 0**)

### 2. Apply Constraints

As shown previously, the left end of the plate is fixed.

- In the **Solution > (-Loads-) Apply > (-Structural-) Displacement > 'On Lines'**
- Select the left end of the plate and click on 'Apply' in the 'Apply U,ROT on Lines' window.
- Fill in the window as shown below.



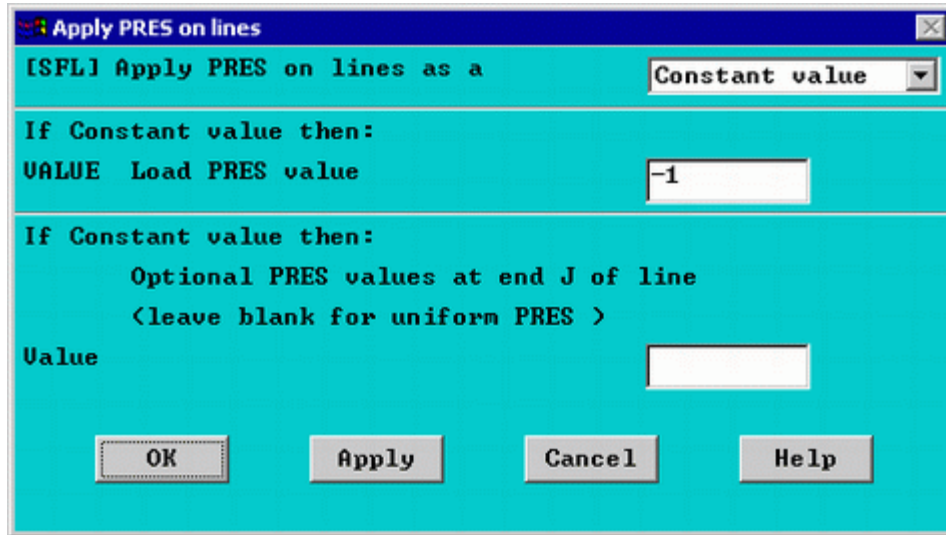
- This location is fixed which means that all DOF's are constrained. Therefore, select 'All DOF' by clicking on it and enter '0' in the Value field as shown above.

You will see some blue triangles in the graphics window indicating the displacement constraints.

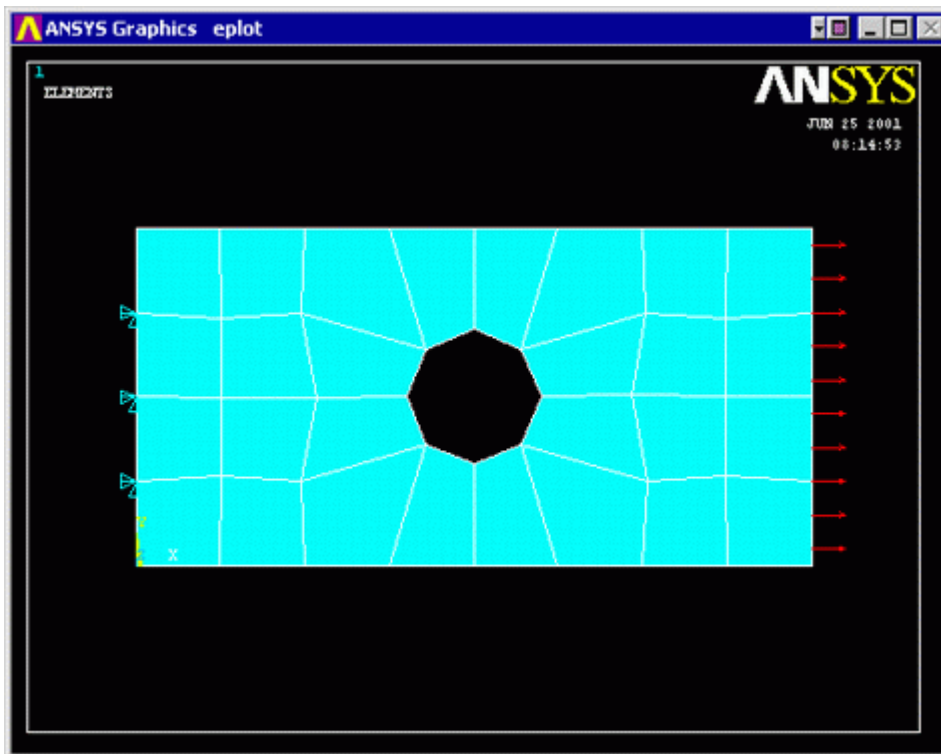
(Alternatively, the command line code for the above step is `DL,4,,ALL,0`)

### 3. Apply Loads

- As shown in the diagram, there is a load of 20N/mm distributed on the right hand side of the plate. To apply this load:  
**Solution > (-Loads-) Apply > (-Structural-) Pressure > On Lines**
- When the window appears, select the line along the right hand edge of the plate and click 'OK'
- Calculate the pressure on the plate end by dividing the distributed load by the thickness of the plate (1 MPa).
- Fill in the "Apply PRES on lines" window as shown below. NOTE:
  - The pressure is uniform along the surface of the plate, therefore the last field is left blank.
  - The pressure is acting away from the surface of the plate, and is therefore defined as a **negative** pressure.



The applied loads and constraints should now appear as shown below.



#### 4. Solving the System

Solution > (-Solve-) Current LS

### Postprocessing: Viewing the Results

#### 1. Hand Calculations

Now, since the purpose of this exercise was to verify the results - we need to calculate what we should find.

**Deflection:** The maximum deflection occurs on the right hand side of the plate and was calculated to be 0.001 mm - neglecting the effects of the hole in the plate (ie - just a flat plate). The actual deflection of

the plate is therefore expected to be greater but in the same range of magnitude.

**Stress:** The maximum stress occurs at the top and bottom of the hole in the plate and was found to be 3.9 MPa.

## 2. Convergence using ANSYS

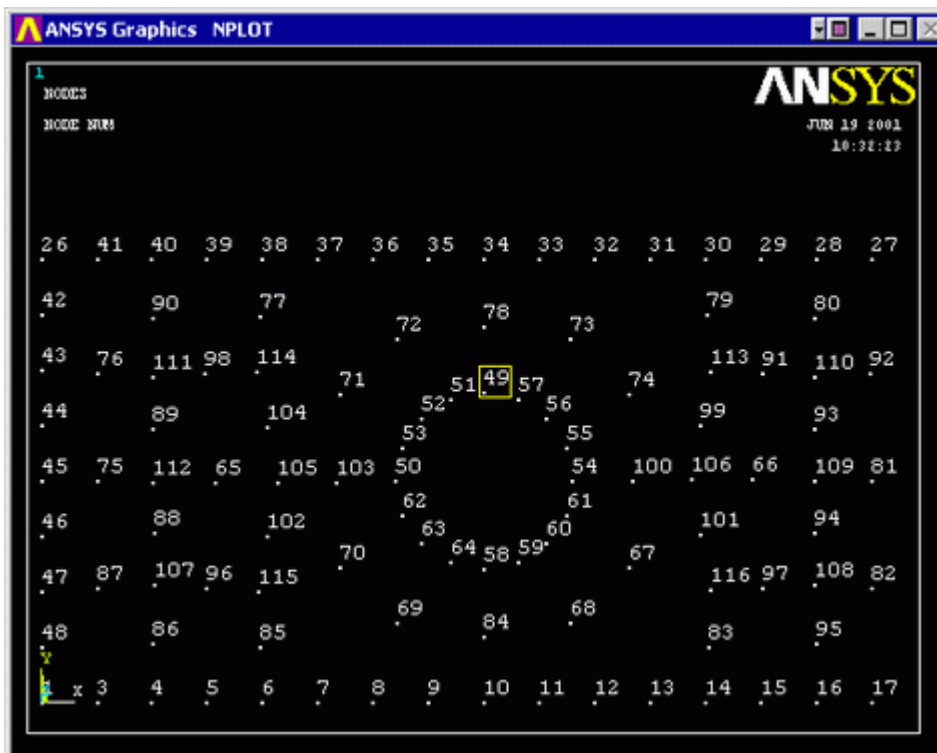
At this point we need to find whether or not the final result has converged. We will do this by looking at the deflection and stress at particular nodes while changing the size of the meshing element.

Since we have an analytical solution for the maximum stress point, we will check the stress at this point. First we need to find the node corresponding to the top of the hole in the plate. First plot and number the nodes

**Utility Menu > Plot > Nodes**

**Utility Menu > PlotCtrls > Numbering...**

- The plot should look similar to the one shown below. Make a note of the node closest to the top of the circle (ie. #49)



- List the stresses (**General Postproc > List Results > Nodal Solution > Stress, Principals SPRIN**) and check the SEQV (Equivalent Stress / von Mises Stress) for the node in question. (as shown below in red)

NODE	S1	S2	S3	SINT	SEQU
1	1.3347	0.23001	0.0000	1.3347	1.2358
2	0.97092	0.0000	-0.48632E-02	0.97578	0.97336
4	1.1106	0.0000	-0.79514E-01	1.1901	1.1524
6	1.3396	0.0000	-0.23720E-01	1.3633	1.3516
8	1.5283	0.0000	-0.12027	1.6486	1.5918
10	0.37083	0.17084	0.0000	0.37083	0.32148
12	1.5365	0.0000	-0.11820	1.6547	1.5988
14	1.3604	0.0000	-0.26629E-01	1.3871	1.3740
16	1.1039	0.0000	-0.12367E-01	1.1163	1.1102
18	0.97090	0.0000	-0.44265E-02	0.97533	0.97312
20	1.0103	0.70933E-01	0.0000	1.0103	0.97672
22	1.0113	0.17820	0.0000	1.0113	0.93503
24	1.0104	0.70622E-01	0.0000	1.0104	0.97700
26	1.3347	0.23128	0.0000	1.3347	1.2354
28	1.1051	0.0000	-0.12481E-01	1.1176	1.1114
30	1.3581	0.0000	-0.26511E-01	1.3847	1.3716
32	1.5372	0.0000	-0.11815	1.6554	1.5996
34	0.37082	0.17085	0.0000	0.37082	0.32147
36	1.5275	0.0000	-0.12029	1.6478	1.5911
38	1.3419	0.0000	-0.23965E-01	1.3658	1.3540
40	1.1098	0.0000	-0.79743E-01	1.1895	1.1517
43	0.92528	0.24567	0.0000	0.92528	0.83017
45	0.88897	0.27391	0.0000	0.88897	0.78854
47	0.92546	0.24573	0.0000	0.92546	0.83033
49	3.0514	0.29745	0.0000	3.0514	2.9141
50	0.0000	-0.31501	-0.86002	0.86002	0.75362
52	1.2620	0.0000	-0.23686	1.4988	1.3956

The equivalent stress was found to be 2.9141 MPa at this point. We will use smaller elements to try to get a more accurate solution.

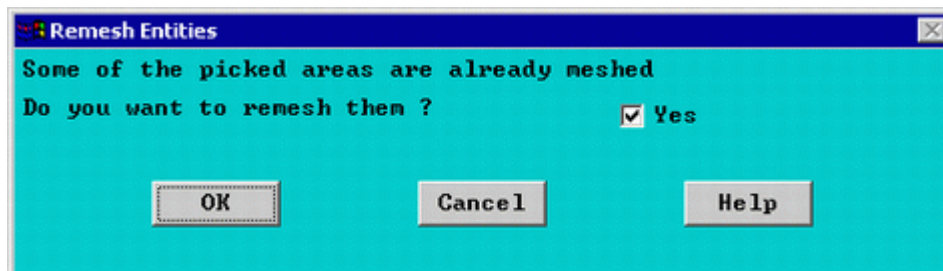
o Resize Elements

- a. To change the element size, we need to go back to the Preprocessor Menu

**Preprocessor > (-Meshing-) Size Cntrls > All Areas**

now decrease the element edge length (ie 20)

- b. Now remesh the model (**Preprocessor > Mesh > (-Areas-) Free**). Once you have selected the area and clicked 'OK' the following window will appear:

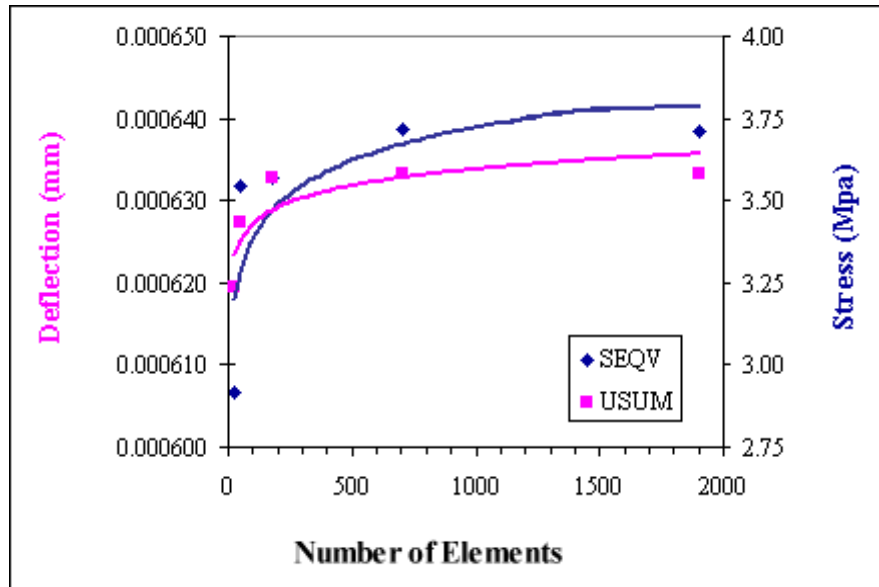


- c. Click 'OK'. This will remesh the model using the new element edge length.

- d. Solve the system again (note that the constraints need not be reapplied). (**Solution Menu > Current LS**)

- o Repeat steps 'a' through 'd' until the model has converged. (note - the number of the node at the top

of the hole has most likely changed. It is essential that you plot the nodes again to select the appropriate node). Plot the stress/deflection at varying mesh sizes as shown below to confirm that convergence has occurred.



Note the shapes of both the deflection and stress curves. As the number of elements in the mesh increases (ie - the element edge length decreases), the values converge towards a final solution.

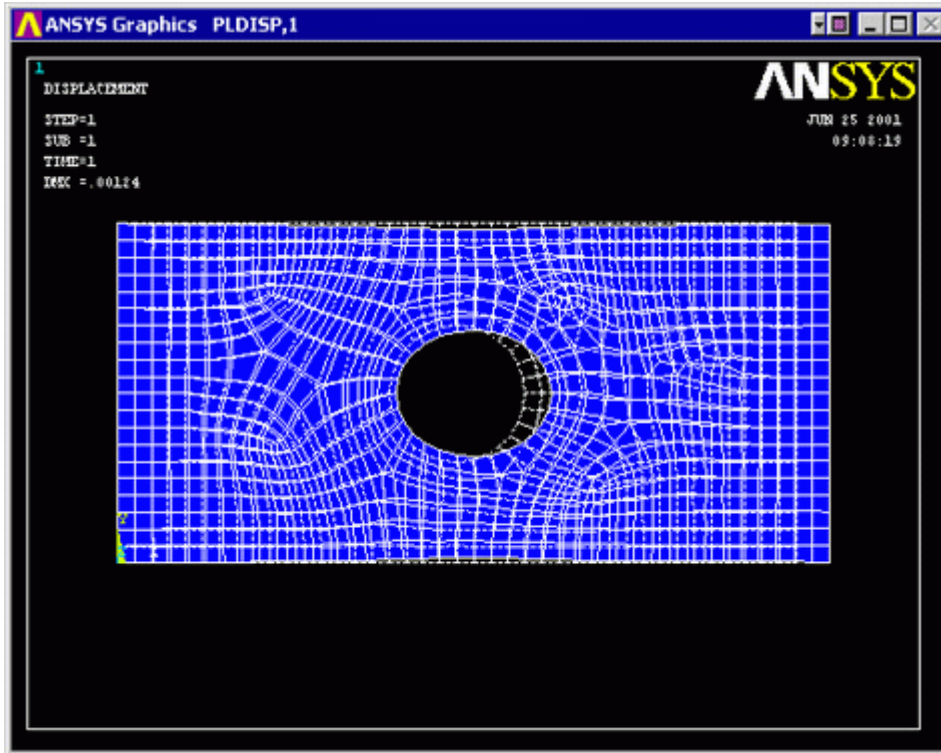
The von Mises stress at the top of the hole in the plate was found to be approximately 3.8 MPa. This is a mere 2.5% difference between the analytical solution and the solution found using ANSYS.

The approximate maximum displacement was found to be 0.0012 mm, this is 20% greater than the analytical solution. However, the analytical solution does not account for the large hole in the center of the plate which was expected to significantly increase the deflection at the end of the plate.

Therefore, the results using ANSYS were determined to be appropriate for the verification model.

### 3. Deformation

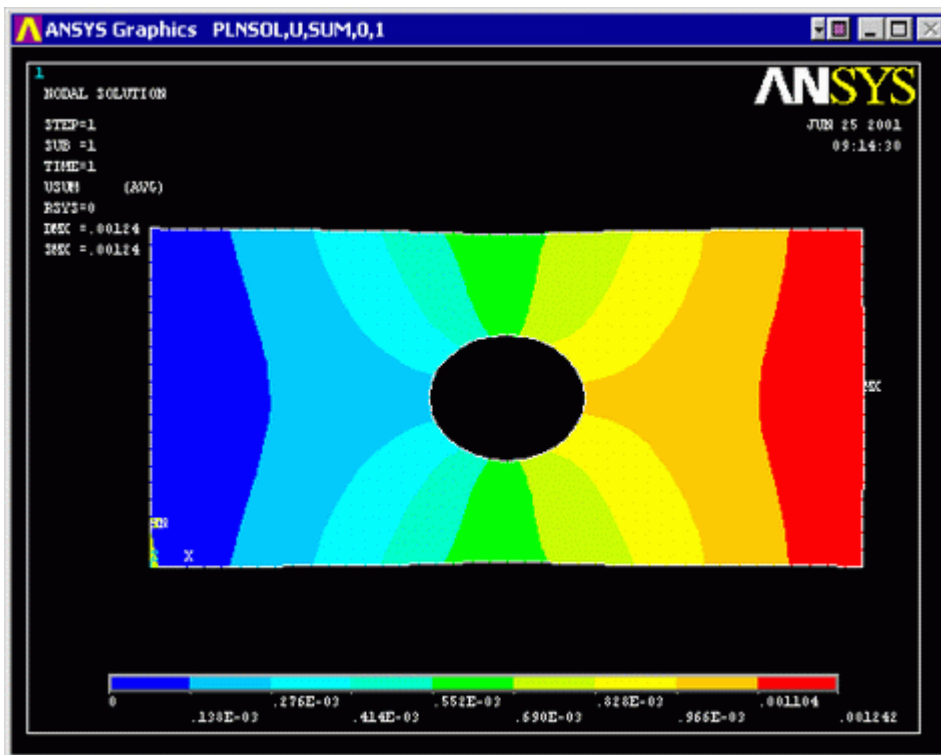
- **General Postproc > Plot Results > Deformed Shape > Def + undeformd** to view both the deformed and the undeformed object.



- Observe the locations of deflection.

#### 4. Deflection

- **General Postproc > Plot Results > Nodal Solution...** Then select DOF solution, USUM in the window.

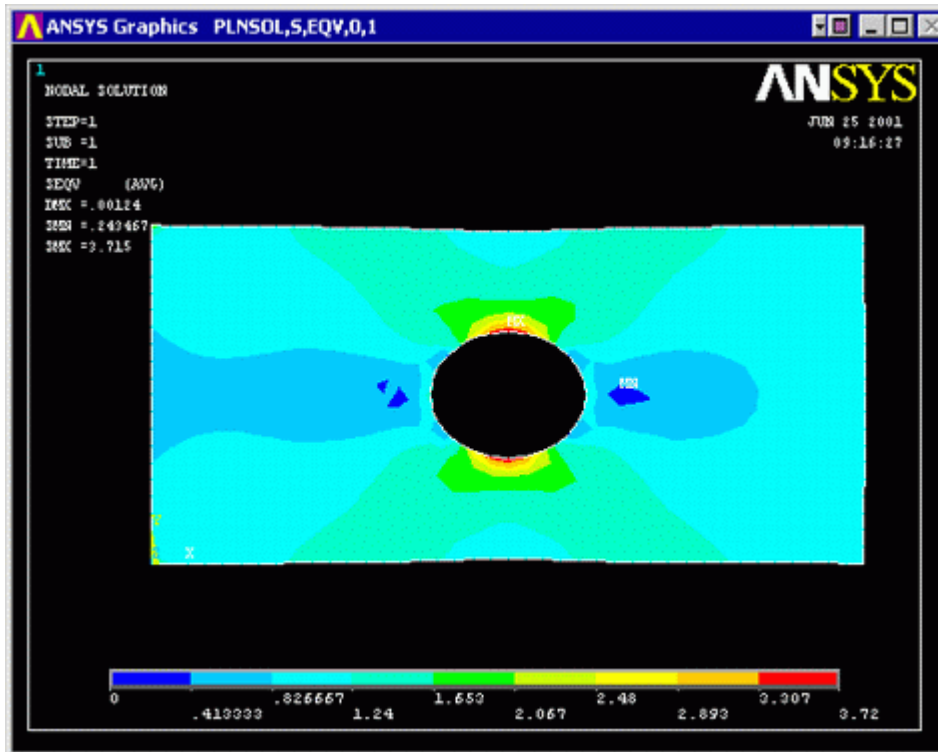


- Alternatively, obtain these results as a list. (**General Postproc > List Results > Nodal Solution...**)

- Are these results what you expected? Note that all translational degrees of freedom were constrained to zero at the left end of the plate.

## 5. Stresses

- **General Postproc > Plot Results > Nodal Solution...** Then select Stress, von Mises in the window.



- You can list the von Mises stresses to verify the results at certain nodes  
**General Postproc > List Results.** Select **Stress, Principals SPRIN**

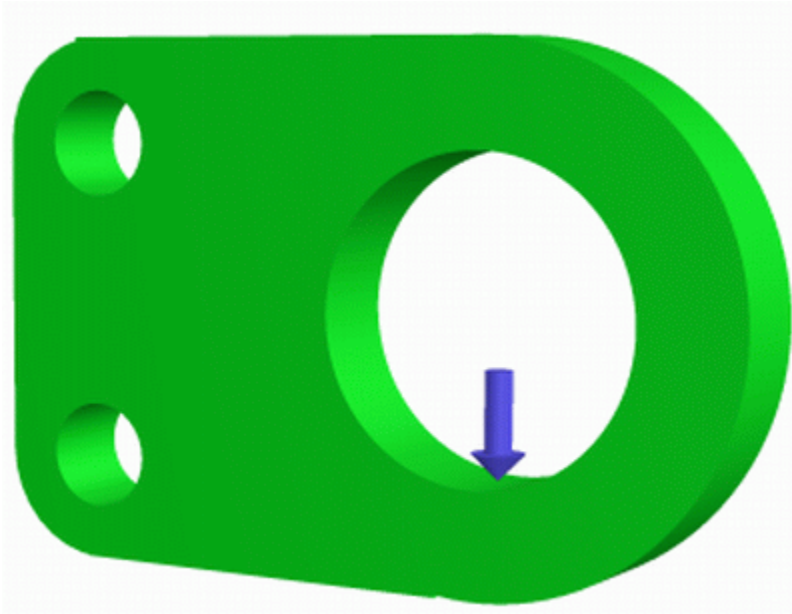
## Command File Mode of Solution

The above example was solved using the Graphical User Interface (or GUI) of ANSYS. This problem has also been solved using the [ANSYS command language interface](#) that you may want to browse. Open the file and save it to your computer. Now go to **File > Read input from...** and select the file.

## Bracket Example

Now we will return to the analysis of the bracket. A combination of GUI and the Command line will be used for this example.

The problem to be modeled in this example is a simple bracket shown in the following figure. This bracket is to be built from a 20 mm thick steel plate. A figure of the plate is shown below.



This plate will be fixed at the two small holes on the left and have a load applied to the larger hole on the right.

---

## Preprocessing: Defining the Problem

1. Give the Bracket example a Title  
Utility Menu > File > Change Title

2. Form Geometry

Again, Boolean operations will be used to create the basic geometry of the Bracket.

- a. Create the main rectangular shape

The main rectangular shape has a width of 80 mm, a height of 100mm and the bottom left corner is located at coordinates (0,0)

- Ensure that the Preprocessor menu is open. (Alternatively type `/PREP7` into the command line window)
- Now instead of using the GUI window we are going to enter code into the 'command line'. Now I will explain the line required to create a rectangle:

```
BLC4, XCORNER, YCORNER, WIDTH, HEIGHT  
BLC4, X coord (bottom left), Y coord (bottom left), width, height
```

- Therefore, the command line for this rectangle is `BLC4,0,0,80,100`

- b. Create the circular end on the right hand side

The center of the circle is located at (80,50) and has a radius of 50 mm

The following code is used to create a circular area:

CYL4, XCENTER, YCENTER, RAD1  
 CYL4, X coord for the center, Y coord for the center, radius

- Therefore, the command line for this circle is **CYL4 , 80 , 50 , 50**

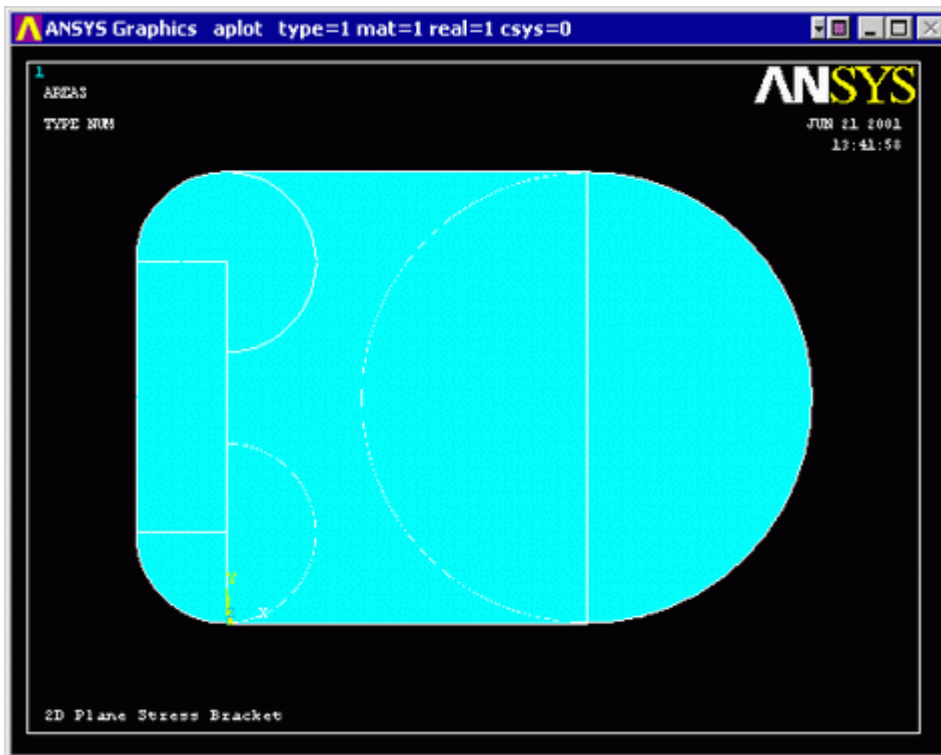
c. Now create a second and third circle for the left hand side using the following dimensions:

parameter	circle 2	circle 3
XCENTER	0	0
YCENTER	20	80
RADIUS	20	20

d. Create a rectangle on the left hand end to fill the gap between the two small circles.

XCORNER	-20
YCORNER	20
WIDTH	20
HEIGHT	60

Your screen should now look like the following...

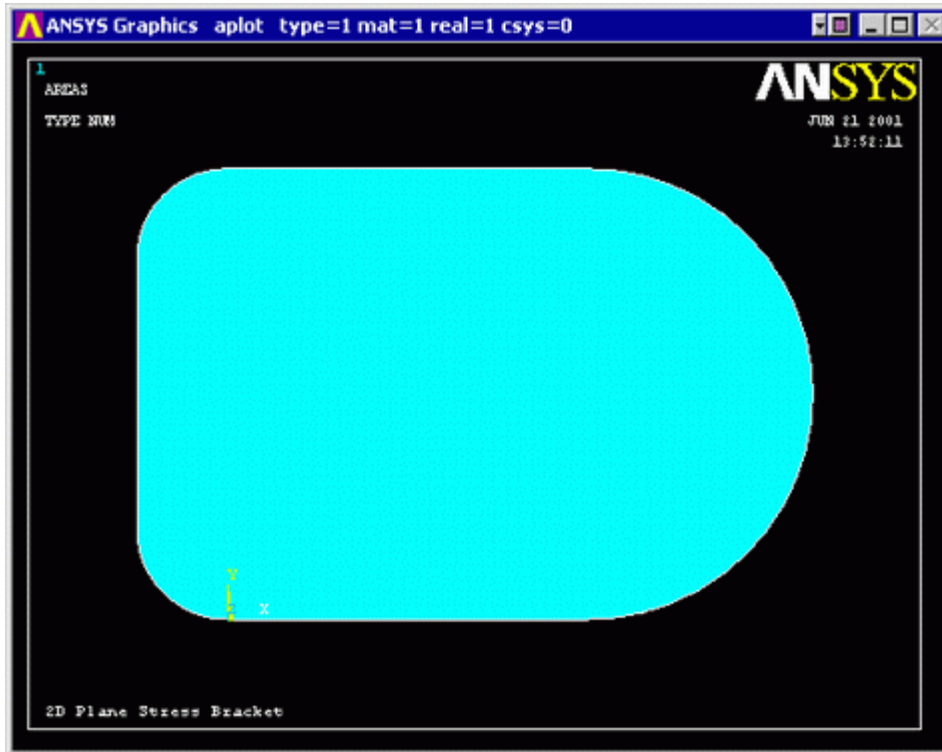


e. Boolean Operations - Addition

We now want to add these five discrete areas together to form one area.

- To perform the Boolean operation, from the Preprocessor menu select:  
**Operate > -Booleans- Add > Areas >**
  - In the 'Add Areas' window, click on 'Pick All'
- (Alternatively, the command line code for the above step is **AADD,ALL**)

You should now have the following model:



f. Create the Bolt Holes

We now want to remove the bolt holes from this plate.

- Create the three circles with the parameters given below:

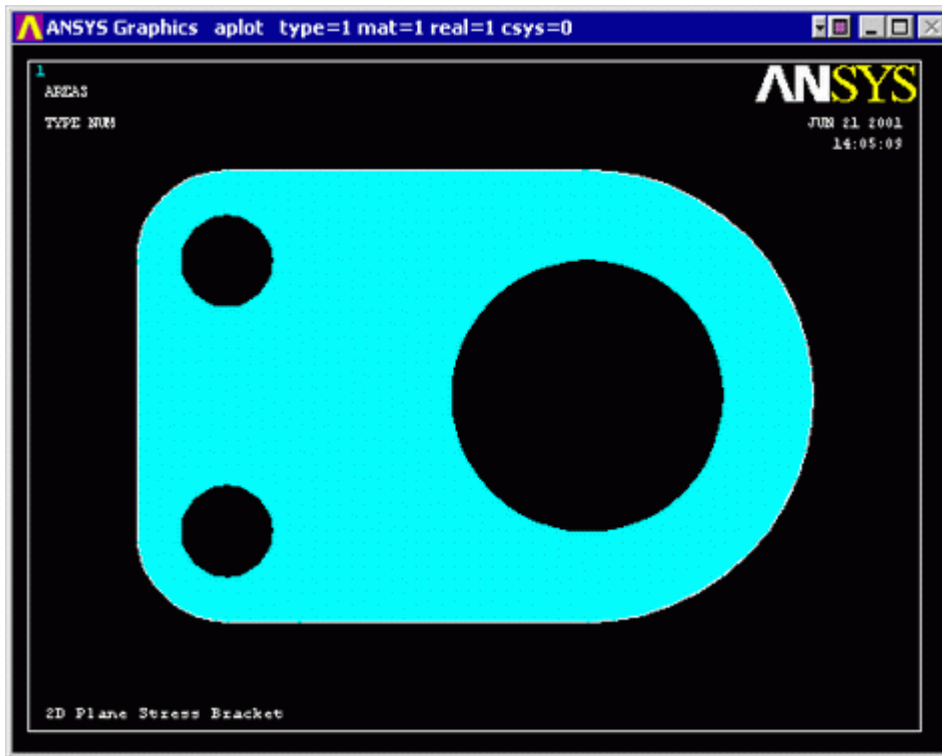
parameter	circle 1	circle 2	circle 3
WP X	80	0	0
WP Y	50	20	80
radius	30	10	10

- Now select  
**Preprocessor > (-Modeling-) Operate > (-Booleans-) Subtract > Areas**
- Select the base areas from which to subtract (the large plate that was created)
- Next select the three circles that we just created. Click on the three circles that you just

created and click 'OK'.

(Alternatively, the command line code for the above step is `ASBA, 6, ALL`)

Now you should have the following:



### 3. Define the Type of Element

As in the verification model, PLANE82 will be used for this example

- **Preprocessor > Element Type > Add/Edit/Delete**
- Use the 'Options...' button to get a plane stress element with thickness

(Alternatively, the command line code for the above step is `ET, 1, PLANE82` followed by `KEYOPT, 1, 3, 3`)

- Under the Extra Element Output K5 select nodal stress.

### 4. Define Geometric Constants

- **Preprocessor > Real Constants > Add/Edit/Delete**
- Enter a thickness of 20mm.

(Alternatively, the command line code for the above step is `R, 1, 20`)

### 5. Element Material Properties

- **Preprocessor > Material Props > Material Library > Structural > Linear > Elastic > Isotropic**

We are going to give the properties of Steel. Enter the following when prompted:

```
EX 200000  
PRXY 0.3
```

(The command line code for the above step is `MP,EX,1,200000` followed by `MP,PRXY,1,0.3`)

## 6. Mesh Size

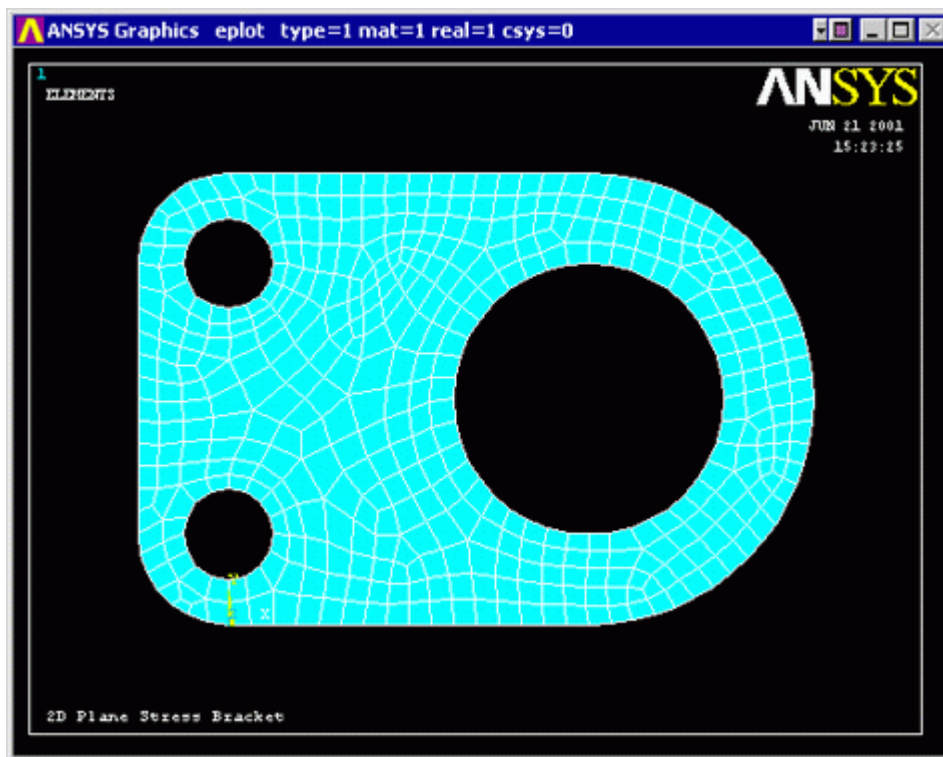
- **Preprocessor > (-Meshing-) Size Cntrls > (-Areas-) All Areas**
- Select an element edge length of 5. Again, we will need to make sure the model has converged.

(Alternatively, the command line code for the above step is `AESIZE,ALL,5,`)

## 7. Mesh

- **'Preprocessor' > 'Mesh' > (-Areas-) 'Free'** and select the area when prompted

(Alternatively, the command line code for the above step is `AMESH,ALL`)



### Saving Your Job

Utility Menu > File > Save as...

---

## Solution Phase: Assigning Loads and Solving

You have now defined your model. It is now time to apply the load(s) and constraint(s) and solve the the resulting system of equations.

## 1. Define Analysis Type

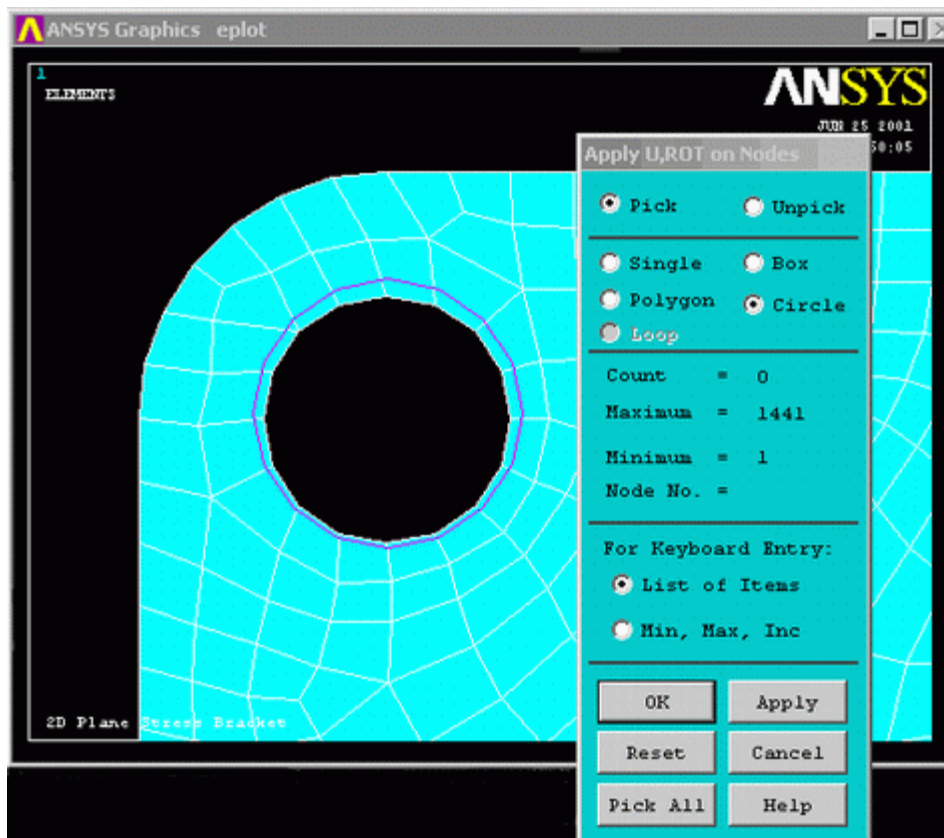
- 'Solution' > 'New Analysis' and select 'Static'.

(Alternatively, the command line code for the above step is `ANTYPE, 0`)

## 2. Apply Constraints

As illustrated, the plate is fixed at both of the smaller holes on the left hand side.

- **Solution > (-Loads-) Apply > (-Structural-) Displacement > On Nodes**
- Instead of selecting one node at a time, you have the option of creating a box, polygon, or circle of which all the nodes in that area will be selected. For this case, select 'circle' as shown in the window below. (You may want to zoom in to select the points **Utility Menu / PlotCtrls / Pan, Zoom, Rotate...**) Click at the center of the bolt hole and drag the circle out so that it touches all of the nodes on the border of the hole.

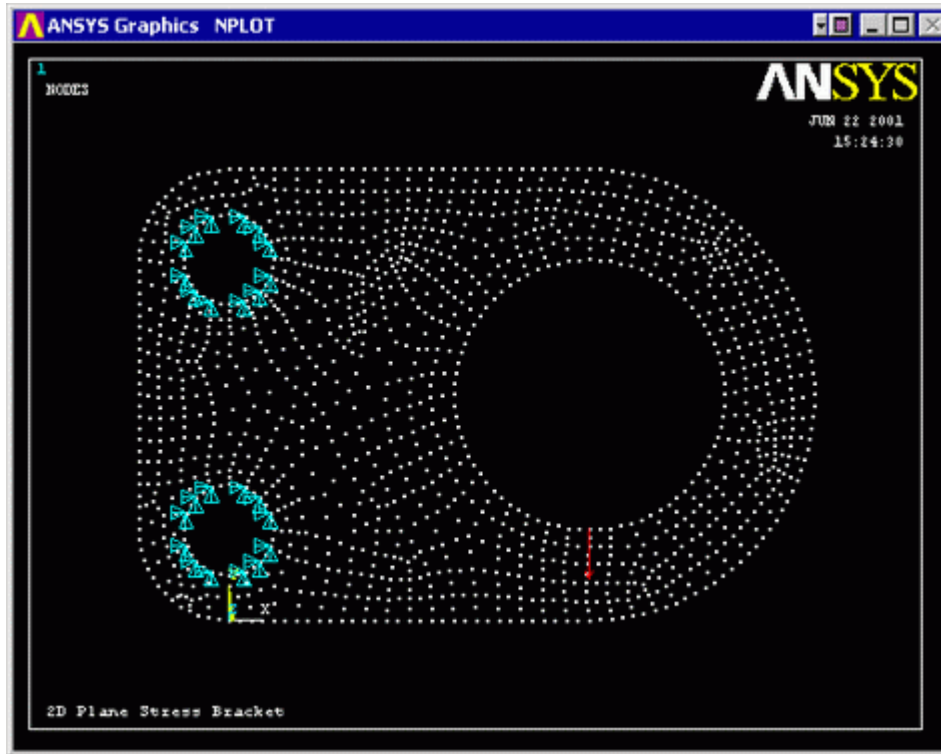


- Click on 'Apply' in the 'Apply U,ROT on Lines' window and constrain all DOF's in the 'Apply U,ROT on Nodes' window.
- Repeat for the second bolt hole.

## 3. Apply Loads

As shown in the diagram, there is a single vertical load of 1000N, at the bottom of the large bolt hole. Apply this force to the respective keypoint ( **Solution > (-Loads-) Apply > (-Structural-) Force/Moment > On Keypoints** Select a force in the y direction of -1000)

The applied loads and constraints should now appear as shown below.



#### 4. Solving the System

**Solution > (-Solve-) Current LS**

## Post-Processing: Viewing the Results

We are now ready to view the results. We will take a look at the deflected shape and the stress contours once we determine convergence has occurred.

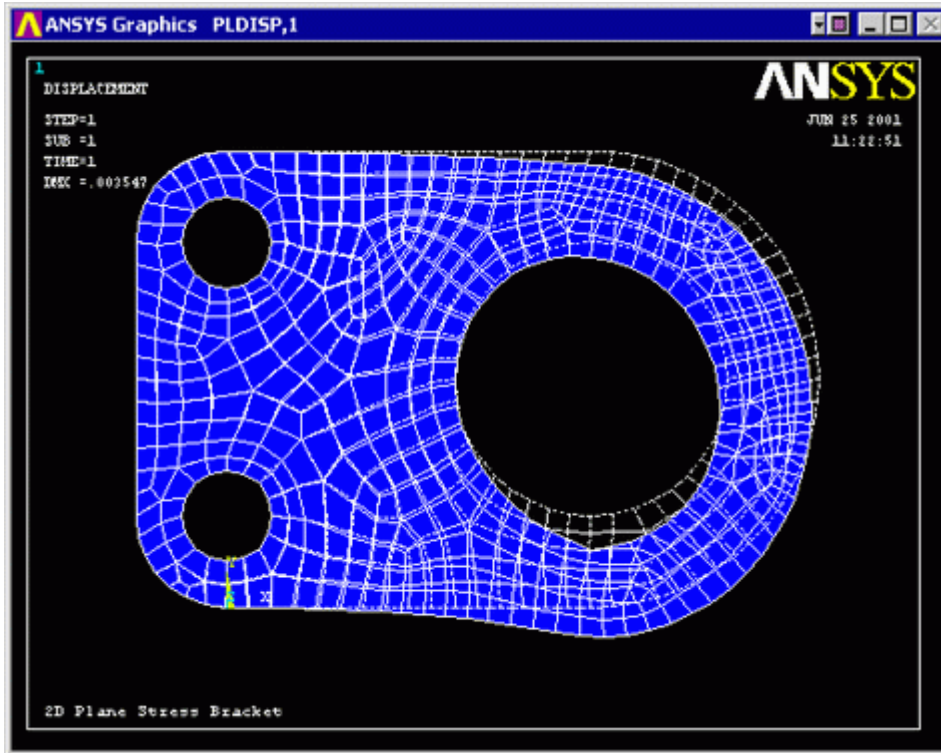
### 1. Convergence using ANSYS

At this point we need to find whether or not the final result has converged. Because we cannot solve for a solution analytically, we must try to

### 2. Deformation

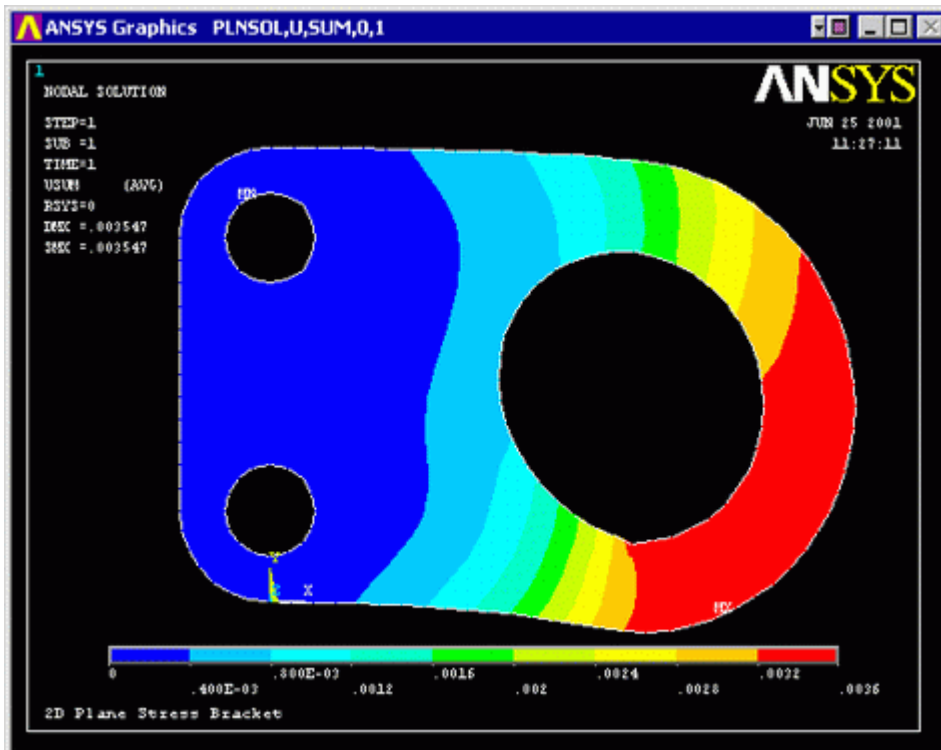
- **General Postproc > Plot Results > Def + undeformed** to view both the deformed and the undeformed object.

The graphic should be similar to the following



- Observe the locations of deflection. Ensure that the deflection at the bolt hole is indeed 0.

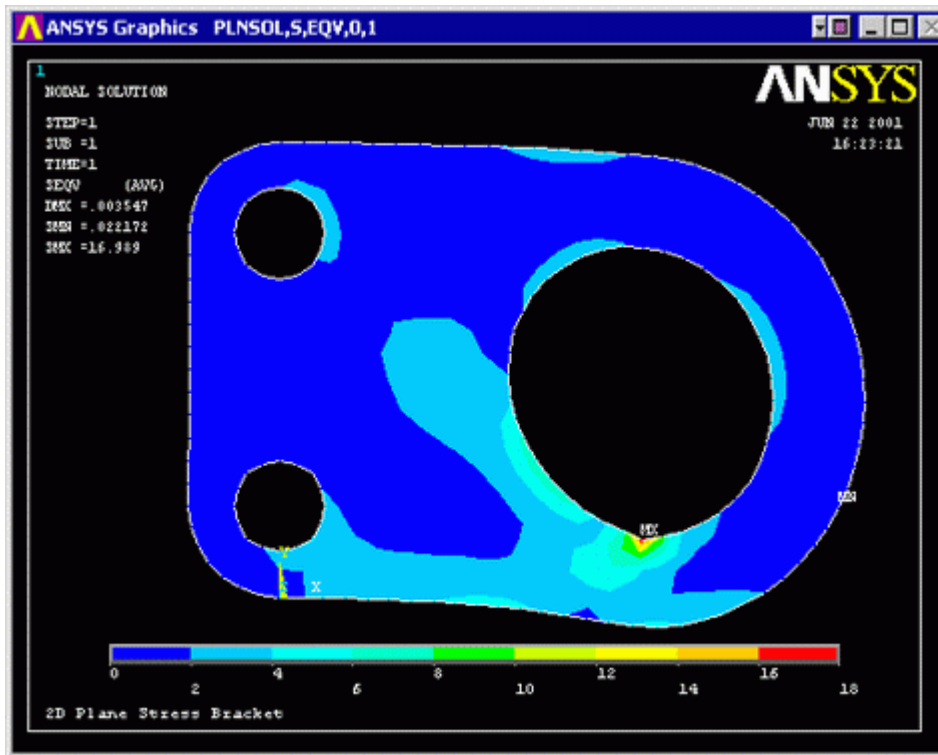
### 3. Deflection



- Alternatively, obtain these results as a list. (**General Postproc > List Results > Nodal Solution...**)
- Are these results what you expected? Note that all translational degrees of freedom were constrained to zero at the bolt holes.

#### 4. Stresses

- **General Postproc > Plot Results > Nodal Solution...** Then select von Mises Stress in the window.



- You can list the von Mises stresses to verify the results at certain nodes  
**General Postproc > List Results.** Select **Stress, Principals SPRIN**

## Command File Mode of Solution

The above example was solved using the Graphical User Interface (or GUI) of ANSYS. This problem has also been solved using the [ANSYS command language interface](#) that you may want to browse. Open the file and save it to your computer. Now go to '**File > Read input from...**' and select the file.

## Quitting ANSYS

To quit ANSYS, click 'QUIT' on the ANSYS Toolbar or select **Utility Menu > File > Exit...** In the window that appears, select 'Save Everything' (assuming that you want to) and then click 'OK'.